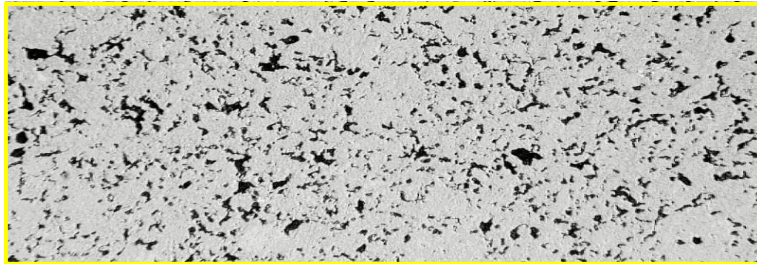


# SUPERFINE GRAPHITE



**E**

**9**

**0**

**0**

## Typical Physical Properties

<b>Average Particle Size (<math>\mu</math>):</b>	<b>&lt;8</b>
<b>Flexural Strength (psi):</b>	<b>10,000</b>
<b>Apparent Density (gm/cc):</b>	<b>1.78</b>
<b>Hardness (Shore) :</b>	<b>70</b>
<b>Electrical Resistivity (<math>\mu\Omega</math>in):</b>	<b>600</b>

## Typical E-900 Applications

**Die Cast Dies**

**Blind Cavities**

**Wire Cut Electrodes**

**Roughing / Finishing**

**Powdered Metal Tooling**